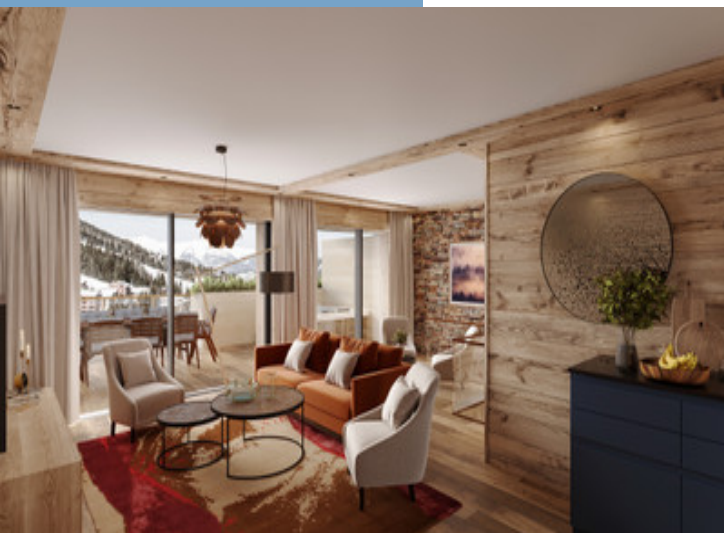




QUALITY, OFF PLAN 4 - 7 BEDROOM  
APARTMENTS FOR SALE WITH SPA IN A  
FANTASTIC CENTRAL LOCATION IN  
COURCHEVEL

www.leggettprestige.com

QUALITY, OFF PLAN 4 - 7  
BEDROOM APARTMENTS  
FOR SALE WITH SPA IN A  
FANTASTIC CENTRAL  
LOCATION IN COUR...



| PROPERTY FACT FILE   |  |
|--|--|
| REFERENCE  | A19896SM73                                       |
| PRICE  | POA<br><br>*agency fees to be paid by the seller |
| BEDROOM  | 7  |
| BATHROOM   | 7  |
| ACCOMMODATION  | 280 m <sup>2</sup>                               |
| LAND   | 0 m <sup>2</sup>                                 |
| TOWN   | Courchevel                                       |
| DEPARTMENT   |  |
| LOCATION   | Village property                                 |
| TYPE   | Maison de Vacances, Apartment,<br>Ski Apartment  |
| CONDITION  | New Build  |
| FEATURES   | Close to ski resort, Less than 15<br>mins to ski |
| *Price based on current exchange rate which is subject to change |  |



- Location in the heart of Courchevel Moriond (1650)
- Amazing views plus a swimming pool and spa
- Next to all amenities, ski pistes and ski lifts
- Good rental potential with in house management
- Financial incentives for off plan properties

QUALITY, OFF PLAN 4 - 7  
BEDROOM APARTMENTS  
FOR SALE WITH SPA IN A  
FANTASTIC CENTRAL  
LOCATION IN COUR...

Ref : A19896SM73

This fantastic development of off plan, quality apartments in the heart of Courchevel Moriond will be ready for delivery winter 2023. These apartments range from 4 to 7 bedrooms, from 151m2 to 340m2 and prices are from 2 945 000€ to 5 425 000€. They can be used for personal use and also rented via the

## DESCRIPTION

These fantastic, quality apartments offer the ultimate in convenience from the initial purchase, to the holidays you will enjoy, and the income generated from rentals. With the easy access to skiing, shops and restaurants and your own swimming pool and spa, along with a ski room, concierge service and the other hotel services available, it couldn't be easier to enjoy your time here and to benefit from rental income.

The complete range of apartments is from 2 to 7 bedrooms and a price range of 1 045 000€ to 5 425 000€

The location is absolutely fantastic and highly sought after

Courchevel Moriond is well known for its sunshine and is a great holiday location in both summer and winter. The valley views from each apartment are stunning, with spectacular sunsets.

Additional high-end services will be supplied, including:

Reception and concierge service

Restaurant

Bar

Swimming pool

Spa

Shops

Ski room

Parking

Buying off plan allows you, where possible, a choice of interior materials and finishes, allowing you to really personalise your property. Staged payments are also advantageous to plan your finances.

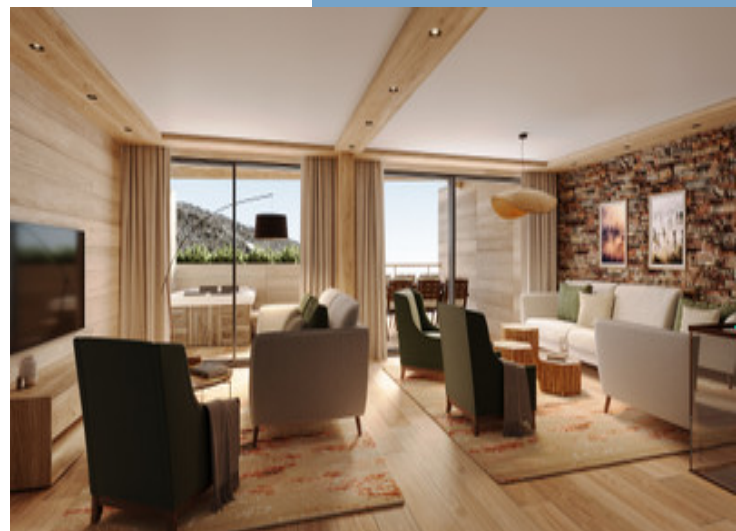
Furniture can be organised with the developers, making this an individual, yet turn key, ready to move into apartment in a sought after location.

The in-house management service will organise and manage your rentals, ensuring your property is well maintained and generating you income when you are not using it.

More Online :

<https://leggettprestige.com/luxury-property-for-sale/view/A19896SM73>

COMPLETE FILE AND PHOTO ON REQUEST



QUALITY, OFF PLAN 4 - 7  
BEDROOM APARTMENTS FOR  
SALE WITH SPA IN A  
FANTASTIC CENTRAL  
LOCATION IN COUR...

Ref : A19896SM73

## ENERGIE-DPE

Information about risks to which this property is exposed is available on the Géorisques website :  
<https://www.georisques.gouv.fr/>

DPE not required.

## NOTICE

Leggetts, their client and any joint agents give notice that:

1: Quoted prices are subject to fluctuations in exchange rates. Please contact an agent for an up-to-date price. They are not authorised to make or give any representations or warranties in relation to the property either here or elsewhere, either on their own behalf or on behalf of their client or otherwise. They assume no responsibility for any statement that may be made in these particulars. These particulars do not form part of any offer or contract and must not be relied upon as statements or representations of fact. In particular they neither have nor assume responsibility for any statement concerning the financial arrangements or the commercial scheme which may be made available by their clients or others to potential purchasers.

2: Any areas, measurements or distances are approximate. The text, photographs and plans are for guidance only and are not necessarily comprehensive. It should not be assumed that the property has all necessary planning, building regulation or other consents and Leggetts have not tested any services, equipment or facilities. Purchasers must satisfy themselves by inspection or otherwise.

3: These particulars were prepared from preliminary plans and specifications before the completion of the properties and are intended only as a guide. They may have been changed during construction and final finishes could vary. Prospective purchasers should not rely on this information but must get their solicitor to check the plans and specification attached to their contract.

## CONTACT

Réf : A19896SM73  
FILE COMPLETE  
AND PHOTOS  
ON REQUEST

**LEGGETT**  
IMMOBILIER INTERNATIONAL

Téléphone : +33 553 608 488  
E-mail: [prestige@leggett.fr](mailto:prestige@leggett.fr)

LEGGETT IMMOBILIER, 42 ROUTE DE RIBERAC, 24340 LA ROCHEBEAUCOURT, FRANCE  
UK Freephone: 08700115151 telephone: +33 553 608 488 E-mail: [prestige@leggett.fr](mailto:prestige@leggett.fr)